

Reloading the weapon



			DANGER! 
After the last shot: Slide remains back, cartridge chamber is empty.	Remove the magazine, fill and push in again (see page 3).	Press the slide stop lever, the slide moves forwards.	Mortal danger! Weapon is loaded and cocked!

Unloading remaining ammunition from weapon

			
Release and remove the magazine.	Grip the slide, pull back completely, eject and collect the cartridge(s). Inspect the cartridge chamber - it must be empty!	Release the slide, press the trigger and insert an empty magazine.

Dismantling, cleaning and assembling the weapon

DANGER! **Mortal danger!**
Before dismantling the weapon, ensure that the weapon is not loaded and that there is no ammunition in the weapon or magazine (see page 2, section "Safety check"). Communication between wrist watch and weapon must have been terminated (see page 3, section "Premature termination of communication").

			
Release and remove the magazine, release and pull off the cover.	Pull the slide completely to the rear and lift out.	Remove the slide to the front over the barrel.	Clean the cartridge chamber, barrel and internal mechanical parts with weapon oil.

The weapon is assembled again in the reverse order.
Dismantling of the weapon beyond the extent described here may only be carried out by authorised personnel.

INFO
The national regulations and directives for the storage and transport of weapons and ammunition must be observed and the instructions given must be followed.
Never store and transport the weapon when loaded.



Dear Customer,

This Quick Start Guide provides you with the necessary information in compact form for quickly putting the iP1 SmartSystem into use. Comprehensive information on the safe use of the iP1 SmartSystem can be found in the enclosed operating manual.
The operating manual is also available in printed form from Armatix, on request. Contact data, see rear of this Quick Start Guide.

DANGER! **Mortal danger!**
The use of the weapon can create acute dangers for the life and limb of the user, and for third persons and the immediate surroundings.
➤ In order to avoid these dangers, please read and completely understand the following instructions and all the instructions in the operating manual through attentively and follow them at all times when handling the iP1 SmartSystem.

- This Quick Start Guide does not replace the enclosed operating manual.
- We expressly point out that the weapon must not be used until you have read and understood the operating manual completely.
- Convince yourself before using the weapon that you are familiar with the iP1 SmartSystem and are able to handle the weapon safely.

Armatix, LLC
3880 Pembroke Road
Hollywood, FL 33021
Phone: 954-701-6587
support@armatixus.com
http://www.armatixus.com

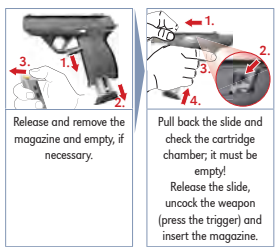
System description

The iP1 SmartSystem consists of two components: The pistol, and the wrist watch via which the user identifies himself to the weapon by entering a PIN. The wrist watch must be worn on the wrist of the firing hand in order to be able to communicate with the weapon.

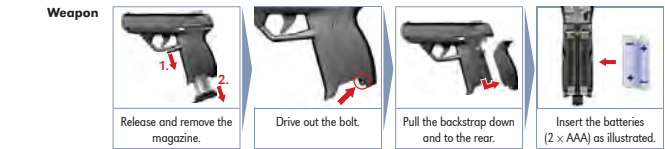
Safety check – create a safe situation

DANGER! Mortal danger!
 If there is a cartridge in the cartridge chamber when the slide is pulled back, the trigger must not be pressed!
 > See operating manual.

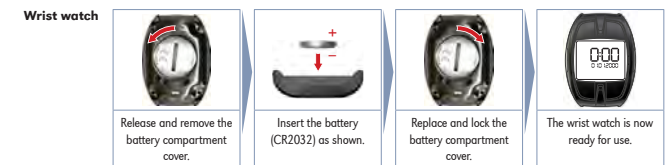
The successful performance of the safety check guarantees that there is no ammunition in the weapon. The safety check should always be carried out when taking over the weapon or if you are unsure about the load condition. The pulling back of the slide ejects the cartridge from the cartridge chamber. If the cartridge is not ejected from the cartridge chamber, please refer to the chapter "Troubleshooting" in the operating manual.



Inserting the batteries



The weapon is assembled again in the reverse order.

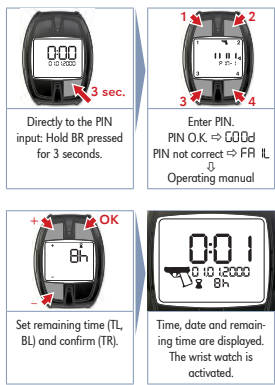


Establish communication between weapon and wrist watch

The communication between weapon and wrist watch is established by entering the PIN supplied. For further setting possibilities on the wrist watch (e.g. date and time), please refer to the operating manual.

PIN The PIN supplied consists of 5 digits from 1 to 4 that can be entered via the buttons on the upper side of the wrist watch.

Example:
 PIN 41324 → Button bottom right (BR = 4), button top left (TL = 1), button bottom left (BL = 3), button top right (TR = 2), button bottom right (BR = 4).



Remaining time After correct input of the PIN and confirmation by the display "GOOD", the remaining time menu is displayed. Here you can enter the time with the buttons + (TL) and - (BL) on expiry of which the communication between wrist watch and pistol ends. The maximum time that can be set is eight hours, the minimum time one hour. The setting is confirmed and saved by pressing the button at top right (TR).

INFO

After inserting a battery, weapon and wrist watch must be synchronised.

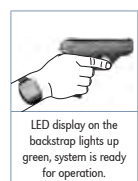
- > Activate the wrist watch (enter PIN).
- > Insert an empty magazine into the weapon.
- > Hold the weapon firmly in your firing hand (backstrap switch is actuated).
- > Hold the buttons TL and BL depressed for 3 seconds.

System ready for operation

The weapon symbol on the display of the wrist watch indicates that the system is ready for operation. When the weapon is held in your firing hand, the backstrap moves forward minimally and actuates the backstrap switch. The LED-Display will indicate one of the following statuses:

- LED display lights up blue: No magazine inserted.
- LED display lights up red: Weapon not ready for firing.
- LED display lights up green: The wrist watch detects the signal from the weapon.

The weapon is ready for firing!

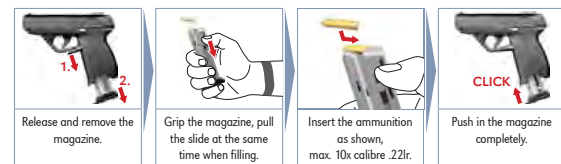


Premature termination of communication

If necessary, the communication between wrist watch and weapon can be also terminated before expiry of the set remaining time. For this the button at bottom right (BR) on the wrist watch must be held depressed for at least 3 seconds.

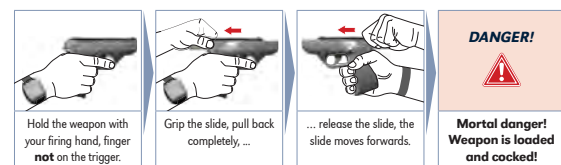
Filling and inserting the magazine

DANGER! Mortal danger!
 The safety precautions described in the operating manual on the handling of ammunition and the loaded weapon must be observed and the instructions given must be followed.



Preparing the weapon for firing

The weapon is only ready for firing when the wrist watch is activated and the green LED on the backstrap is lit.



Aiming and firing

